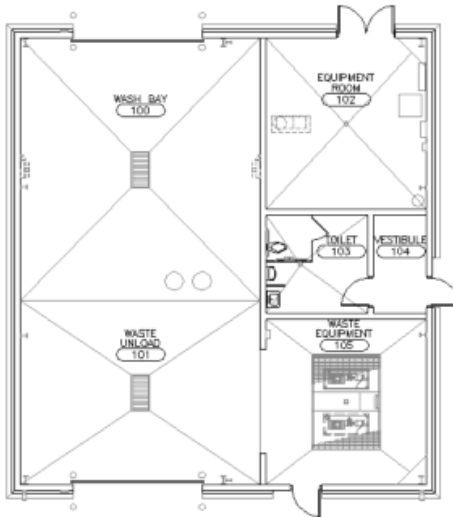


## Waste Receiving Station Kansas City International Airport



Wellner Architects provided architectural design services for this 2200 square foot building to house a waste receiving station for the airlines at Kansas City International Airport. The building will be used by all the airlines and is in a location away from the terminals, where individual dump stations for the airlines currently exist. The facility houses the unloading bay, the waste grinder equipment and a wash bay to clean the waste carts. This building is a portion of the larger building planned to contain service bays for the maintenance equipment used by the airlines. With that in mind, this facility will be constructed with structural elements that are more readily expandable when the rest of the building is added.

**Construction Cost** \$8,500,000 (Estimated)

**Date Complete** 2002

**Key Personnel** Julie Wellner, Marie Boatright, Jason Barker



Wellner Architects, Inc.