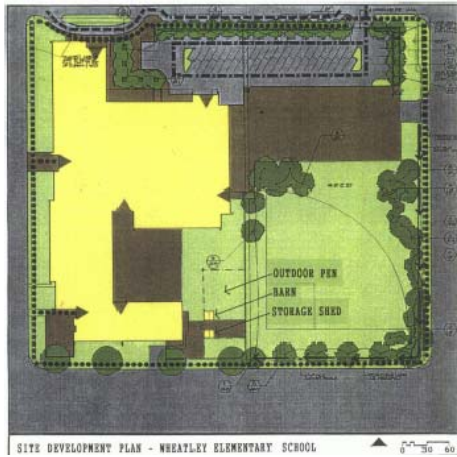


Wheatley Elementary School



Wellner Architects provided architectural services for the three part plan for Wheatley Elementary School which included an 8,200 square foot addition, renovations to 30,000 square feet of the existing building, acquisition of additional area for the site and development of that additional area, and improvements to the exterior facade. Modifications were made to the classrooms, the library, the science labs, the general offices, the multi-purpose rooms and the playground area.

Client	Kansas City Missouri School District
Construction Cost	\$1,700,000
Date Complete	1990
Key Personnel	Julie Wellner