

KCI Terminal Improvements Project Design Team

email. wai@wellner.com

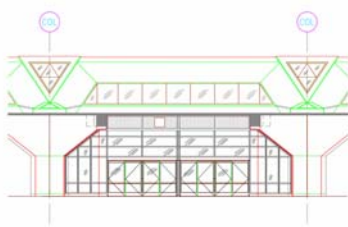
web. www.wellner.com

Fx. 816.221.9456

ph. 816.221.0017

Kansas City, Missouri 64105

802 Broadway, 4th Floor



A major feature of the KCI Terminal Improvement Project is the addition of more interior space towards the public curbside at each terminal. Wellner Architects, Inc. provided design development, construction documents, and construction administration services for the curbside expansions at KCI airport. Valuable space has been added for various functions including concession space for food and retail, enlarged entry vestibules, updated curbside check-in facilities, and areas for public seating.

The design of the curbside addition respects the existing exposed structure while adding a much-needed modernization to the building. Features of the design will benefit airport users, and concessionaires. Entry vestibules have been located to correspond with ticket counters and baggage claims. Concession spaces are positioned to attract more customers. Curbside baggage checking will ease congestion at ticket counters.

Base Bid Construction Cost	\$183,000,000
Date Complete	2004
Key Personnel	Julie Wellner, Clay Porsch, Matt Engle



Wellner Architects, Inc.