

# KCI Terminal Improvements Project Design Team

email. wai@wellner.com

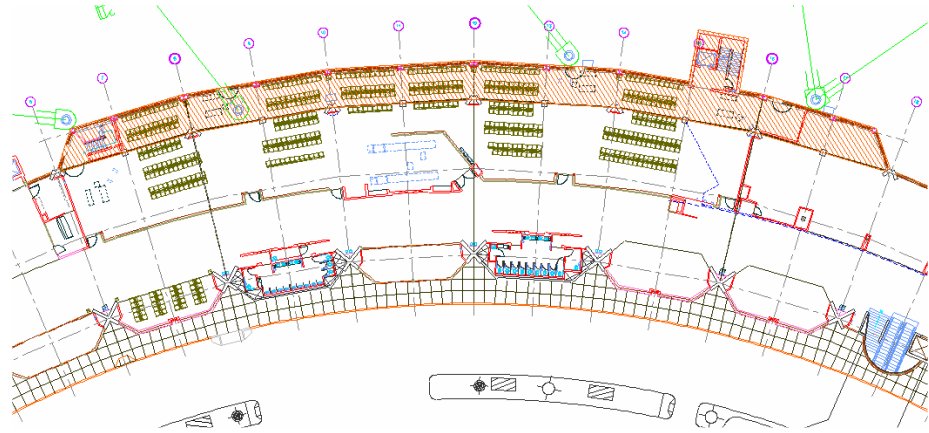
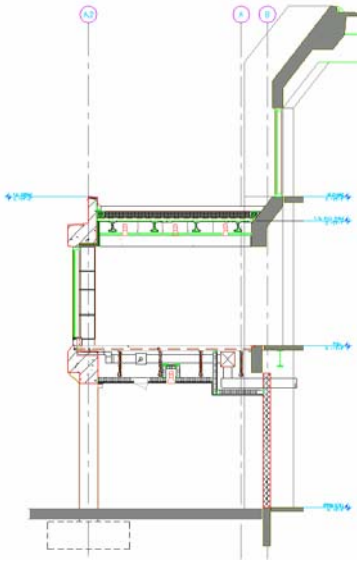
web. www.wellner.com

Fx. 816.221.9456

ph. 816.221.0017

Kansas City, Missouri 64105

802 Broadway, 4<sup>th</sup> Floor



To ease tightly congested passenger holdroom space at Kansas City's International Airport, the existing concrete structure was expanded out onto the apron. Wellner Architects, Inc. provided design, construction documents, and construction administration services for a 6,000 square foot addition of Delta Airlines holdroom. This additional width to the structure greatly reduced the need to lengthen holdroom space along an already limited concourse.

Delta's expansion included two stairwells, one of which extends to the mezzanine level Crown Room space above. Elevators for customers and baggage handling were also incorporated along with 3,300 square feet of baggage handling space on the apron level. To blend in with the existing exposed concrete structure, the new expansion was designed using precast concrete and glass infill matching that of the adjacent airside wall. The modular layout of precast and glazing allowed for quicker erection during the fast-paced phasing sequence of the project.

<b>Construction Cost</b>	\$183,000,000
<b>Date Complete</b>	2004
<b>Key Personnel</b>	Julie Wellner, Clay Porsch, Matt Engle



Wellner Architects, Inc.