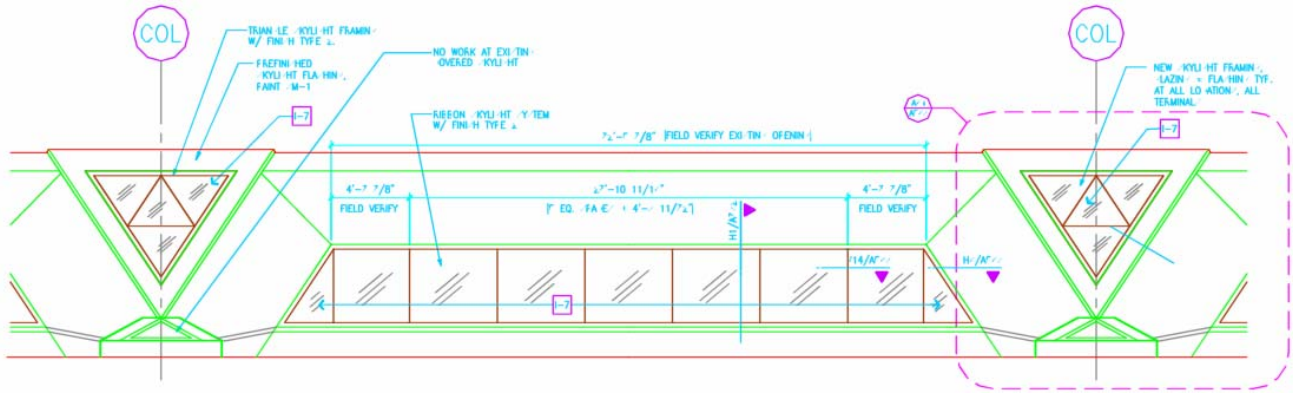


# KCI Terminal Improvements Project Design Team



An increase in natural lighting enhances the appeal of the renovated interior for the Kansas City International Airport. Wellner Architects, Inc. provided design, construction document, and construction administration services for the entire glazing replacement scope at the KCI Airport. Design challenges included reduced sound transmission, security considerations, thermal efficiency, glare control while maintaining high lighting levels, and glass color and tint selections.

The design of the renovated interior required a low reflective glass to allow the interior to be viewed from the exterior during the day. Utilizing the right combination of low-E technology with insulated and laminated glass units, this was achieved while maintaining a thermally efficient product.

Special considerations were given to water problems in the skylights that afflicted the terminals in previous years, along with cost effective means to help control glare in order to make signage easier to read.

The glass replacement also required a glass specification, frame type, and seal type that are stronger than a typical assembly due to the terminal's close proximity to parking.

<b>Base Bid Construction Cost</b>	\$183,000,000
<b>Date Complete</b>	2004
<b>Key Personnel</b>	Julie Wellner, Clay Porsch, Matt Engle