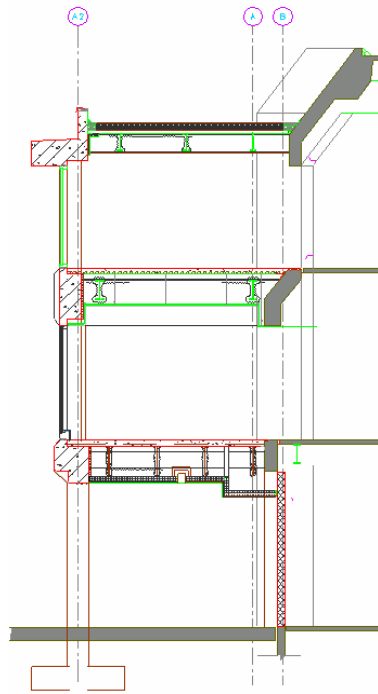
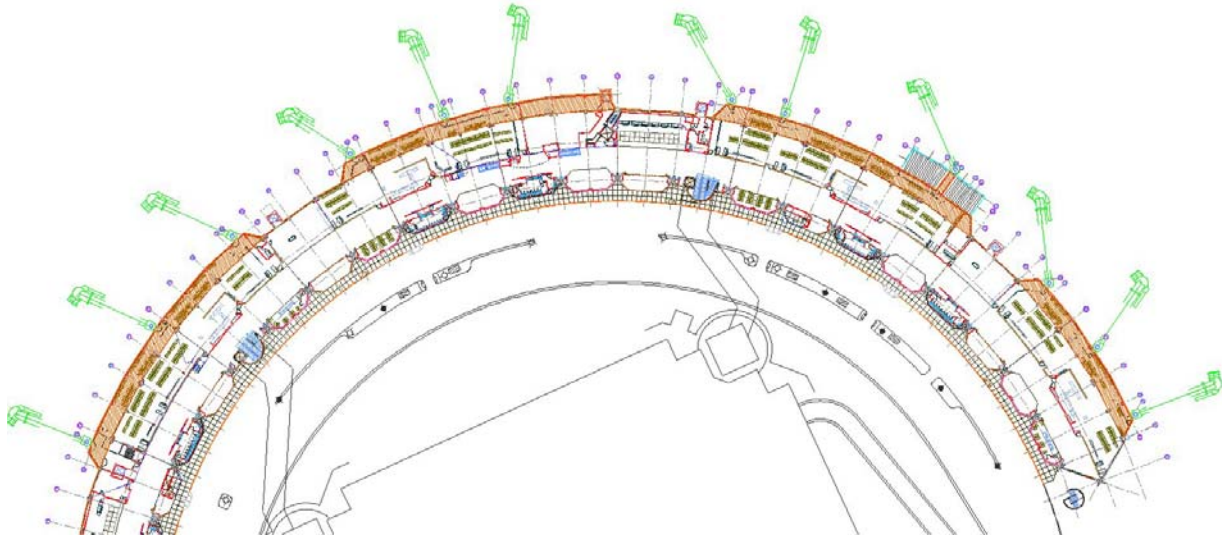


# KCI Terminal Improvements Project Design Team



Resulting from increased air travel, the passenger holdroom space for Southwest Airlines was inadequate. The largest airline carrier at Kansas City's International Airport needed more space. As part of the KCI Terminal Improvements Project, Wellner Architects provided design, construction documents, and construction administration services for the 15,200 square foot airside expansion of the passenger holdrooms. An additional 4,900 square feet was also required for bagroom handling and administration space down on the apron level. By expanding holdroom space out onto the apron, the length of lease space along the concourse could be kept in line to allow other airline tenants to operate out of Terminal B.

To blend in with the existing exposed concrete structure, the new expansion was designed using precast concrete and glass infill matching that of the adjacent airside wall. The modular layout of precast and glazing allowed for quicker erection during the fast paced phasing sequence of the project.

<b>Base Bid Construction Cost</b>	\$183,000,000
<b>Date Complete</b>	2004
<b>Key Personnel</b>	Julie Wellner, Clay Porsch, Matt Engle